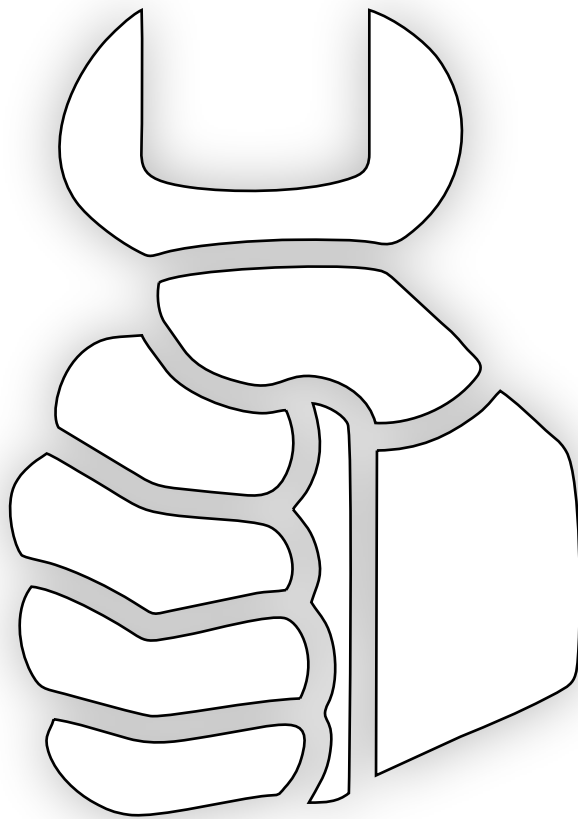


Spare parts list



Service, repair and wear part kits

Seal kit 1

Label kit 3

Mechanical

Breaker body 5

Percussion unit 7

Tightening torque 9

Assembly instruction 11

Dimensions 12

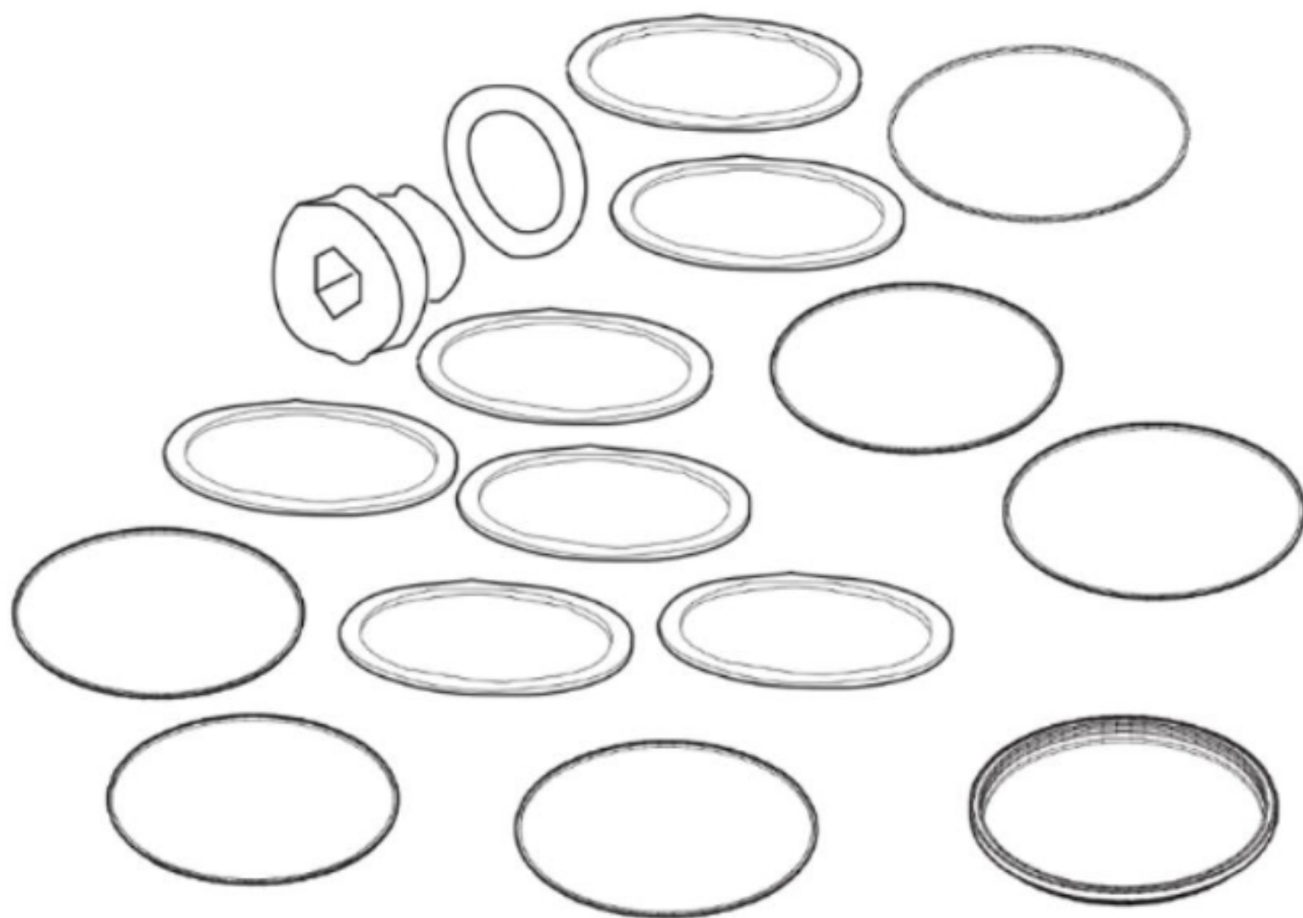
Options/accessories

Hydraulic hoses 14

Optional equipment 17

Working tools 19

Service, repair and wear part kits Seal kit



Refer to the DocMine web page for most up-to-date information. The printed information might be outdated.

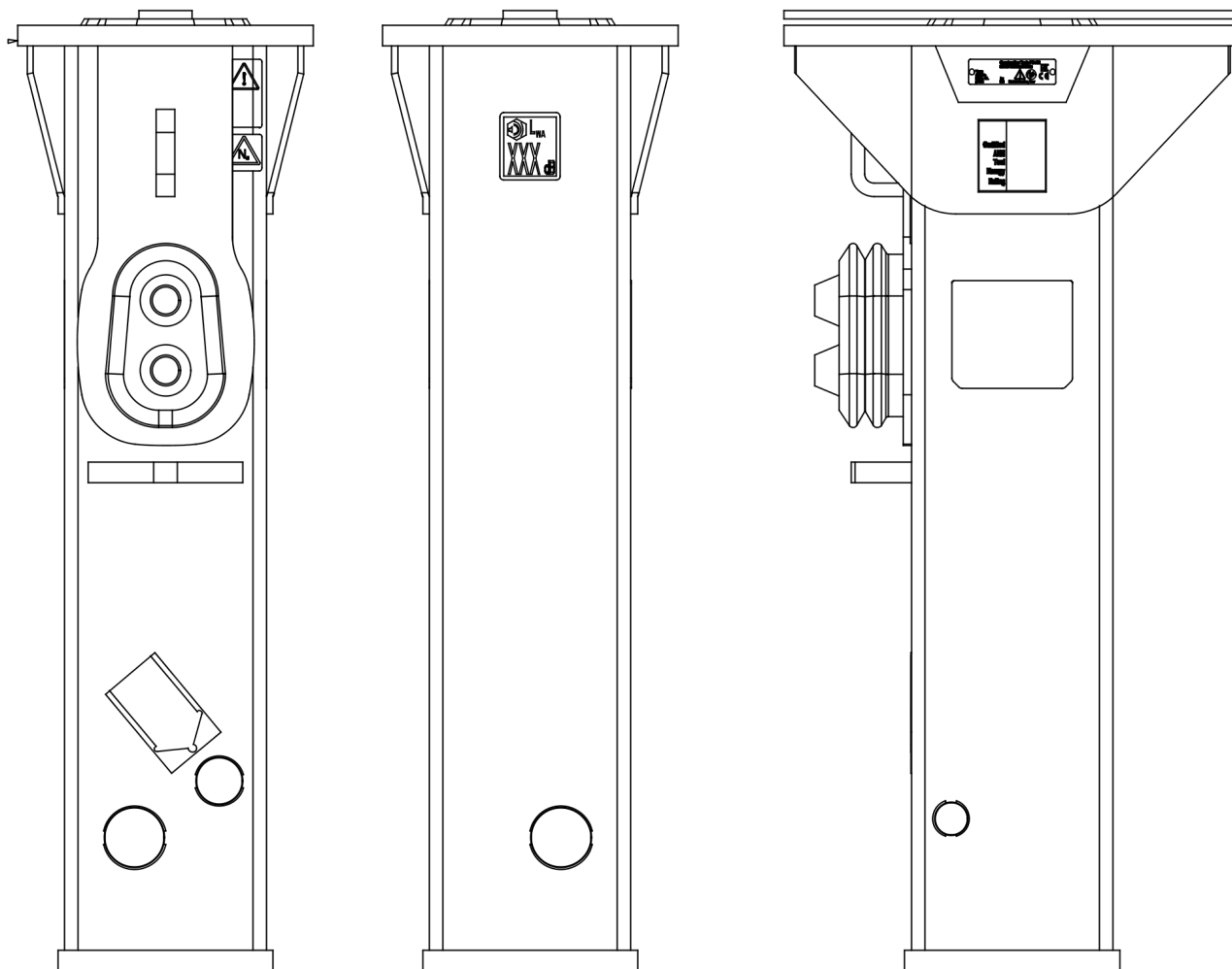
Wed Oct 20 11:36:25 UTC 2021

Item	Part No.	Name	Qty	L
1	3361120011	Seal kit	1	
Not Shown	-	O-RING	1	
Not Shown	-	Threaded plug	1	
Not Shown	-	Seal, 47 x 5.33 mm, 1.85 x 0.21 in.	1	
Not Shown	-	SEAL	2	
Not Shown	-	O-ring, 56.52 x 5.33 mm, 2.23 x 0.21 in. (70 shore)	3	
Not Shown	-	O-ring, 69.22 x 5.33 mm , 2.73 x 0.21 in. (90 shore)	1	
Not Shown	-	Back-up ring, 70.31 x 4.65 mm , 2.77 x 0.18 in. (90 shore)	1	
Not Shown	-	O-ring, 94.62 x 5.33 mm , 3.72 x 0.21 in. (90 shore)	1	
Not Shown	-	Back-up ring, 94.83 x 4.65 mm , 3.73 x 0.18 in. (90 shore)	1	
Not Shown	-	Seal, Ø 104 mm, Ø 4.09 in	1	
Not Shown	-	O-ring, 88.25 x 5.33 mm , 3.47 x 0.21 in. (90 shore)	1	
Not Shown	-	Seal, 50 x 65.5 x 6 mm, 1.97 x 2.58 x 0.24 in.	1	
Not Shown	-	SEAL	1	
Not Shown	-	Wiper of actuating cylinder	1	
Not Shown	-	O-ring, 19.18 x 2.46 mm , 0.76 x 0.10 in. (70 shore)	2	

Refer to the DocMine web page for most up-to-date information. The printed information might be outdated.

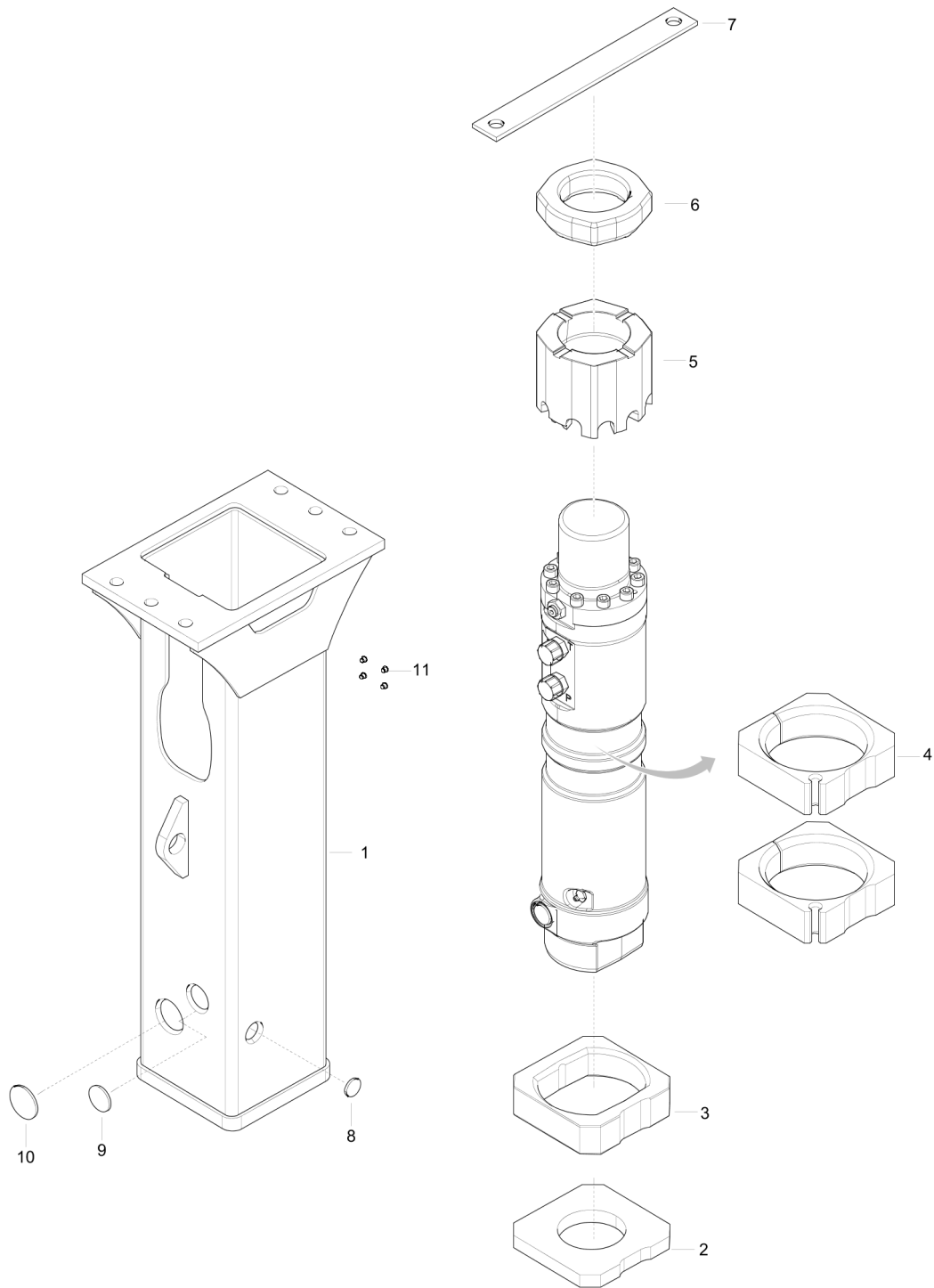
Wed Oct 20 11:36:25 UTC 2021

Service, repair and wear part kits Label kit



Item	Part No.	Name	Qty	L
1	3382070134	Label kit	1	

Mechanical Breaker body

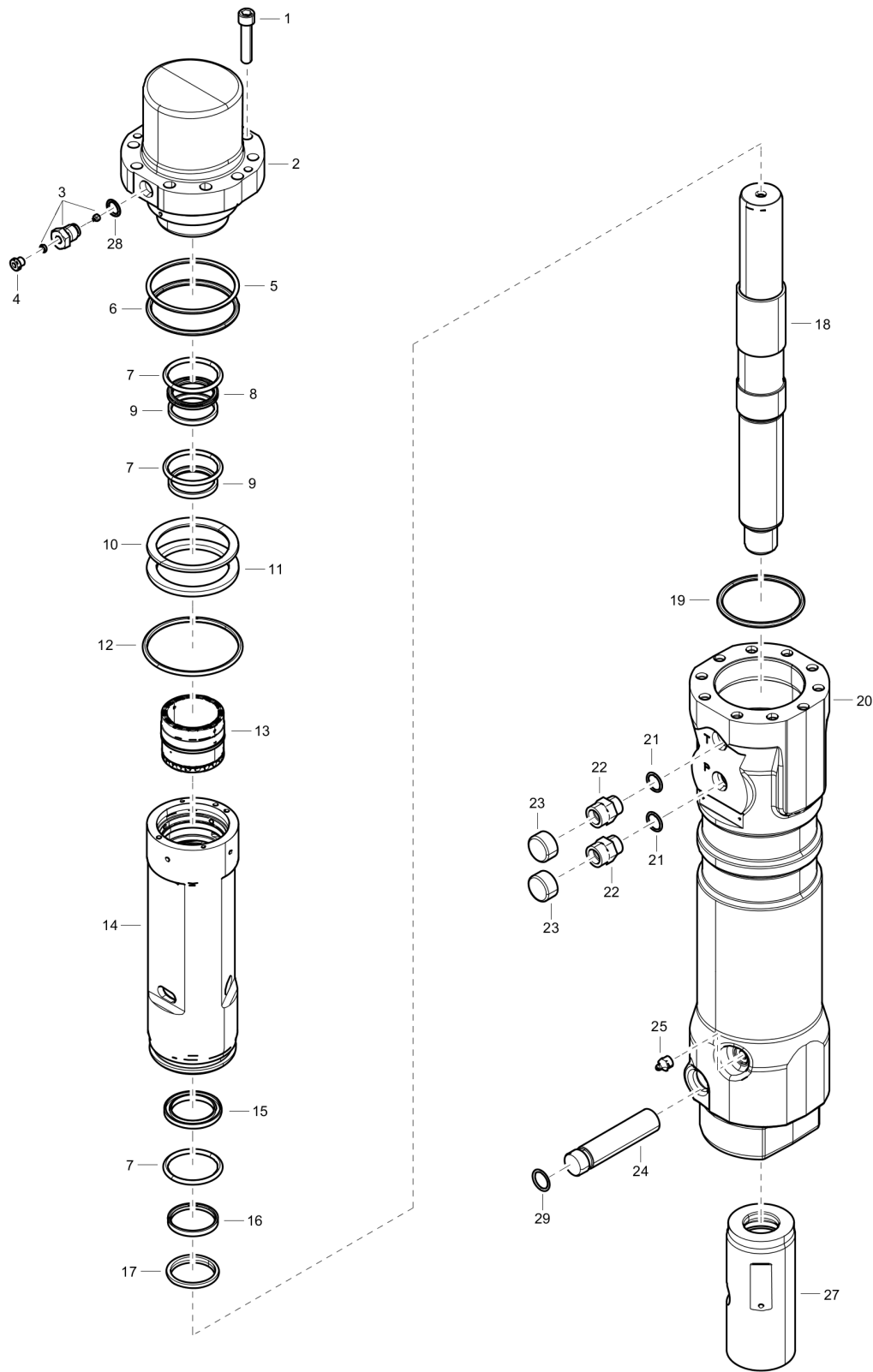


Item	Part No.	Name	Qty	L
1	3362120002	Breaker box	1	
2	3362420001	Shock absorber	1	
3	3315288620	Lower Guide plate	1	
4	3362420003	Upper Guide plate	2	
5	3315431700	Spacer	1	
6	3315431600	Shock absorber	1	
7	3362491017	Retainer	1	
8	3362491015	Plug	3	
9	3362491014	Plug	1	
10	3362491013	Plug	1	

Refer to the DocMine web page for most up-to-date information. The printed information might be outdated.

Wed Oct 20 11:36:26 UTC 2021

Mechanical Percussion unit



Refer to the DocMine web page for most up-to-date information. The printed information might be outdated.

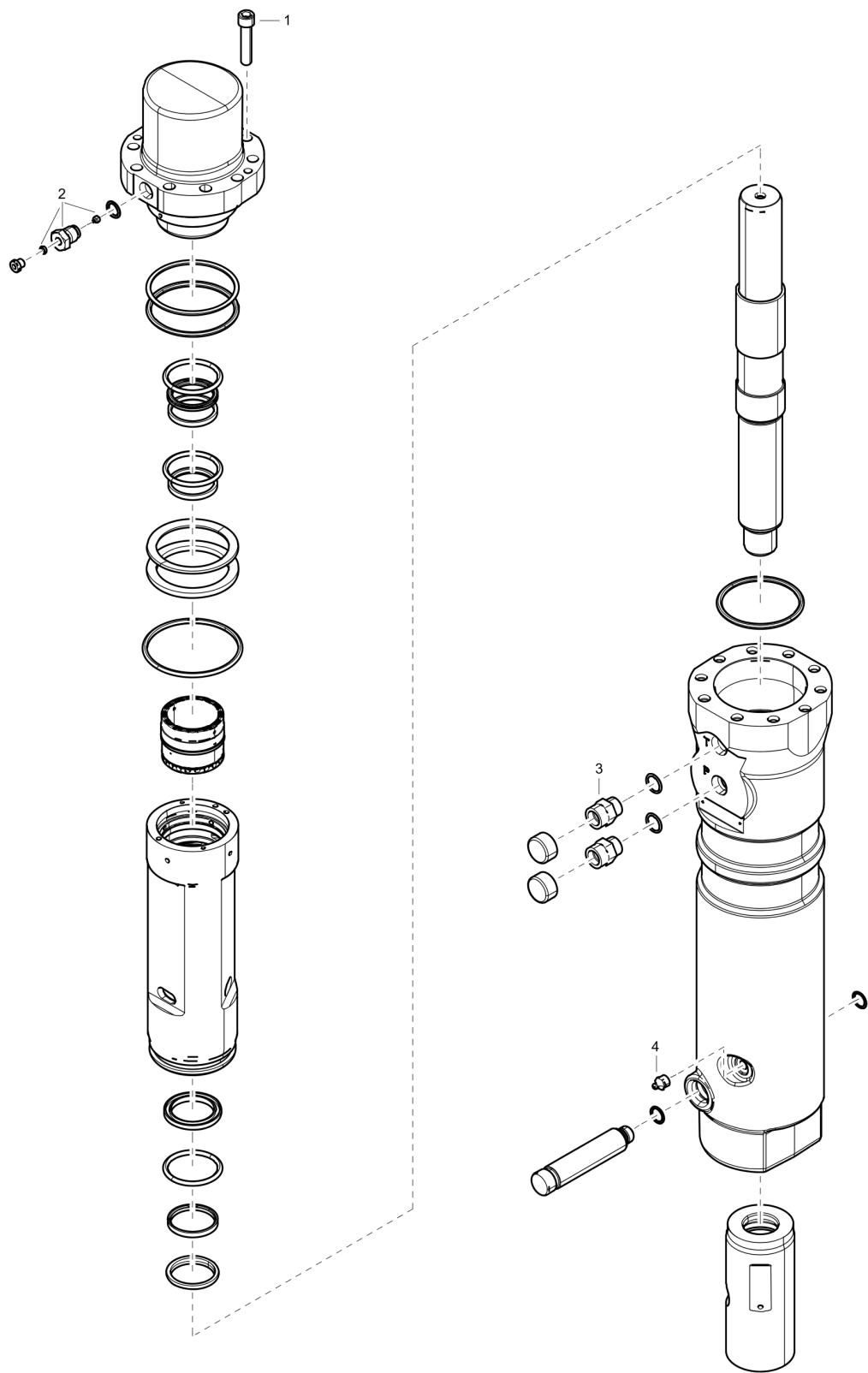
Wed Oct 20 11:36:27 UTC 2021

Item	Part No.	Name	Qty	L
1	3315431100	MC6S M12x55 8.8 g627	10	
2	3315429600	Backhead	1	
3	3363087286	Filling valve complete	1	
4	3360478426	Threaded plug	1	
28	0663925100	O-ring, 15.08x2.62	1	
5	3361192021	Backup ring, 95	1	
6	3361192020	O-ring, 94.62x5.33	1	
7	3361192044	O-ring, 56.25x5.33	3	
8	3361192042	Quadring	1	
9	3361192043	Stepseal	2	
10	3361120004	Plate spring	1	
11	3361120005	Spacer	1	
12	3315296610	Sealing	1	
13	3361120106	Control valve	1	
14	3361120002	Cylinder body	1	
15	3361192049	Sealing	1	
16	3361192050	Stepseal	1	
17	3361192051	Wiper	1	
18	3315332630	Piston	1	
19	3361192047	O-ring, 88.25x5.33	1	
20	3315429705	Cylinder housing	1	
21	3361192067	O-ring	2	
22	3361031476	Nipple	2	
23	3361353486	Cap	2	
24	3315429811	Retainer	1	
25	0544215300	GREASE NIPPLE	1	
27	3361120009	Wear bushing	1	
29	0663212111	O-RING 22X3,5	1	

Refer to the DocMine web page for most up-to-date information. The printed information might be outdated.

Wed Oct 20 11:36:27 UTC 2021

Mechanical Tightening torque



Item	Part No.	Name	Qty	L
1	-	Bolt, in production with new - 65 Nm	-	A
1	-	Bolt, in service with molycote - 78 Nm, see "Assembly instruction"	-	
2	-	Filling valve- 130 Nm	-	
3	-	Nipple- 90 Nm	-	
4	-	Lubrication nipple- 20 Nm	-	

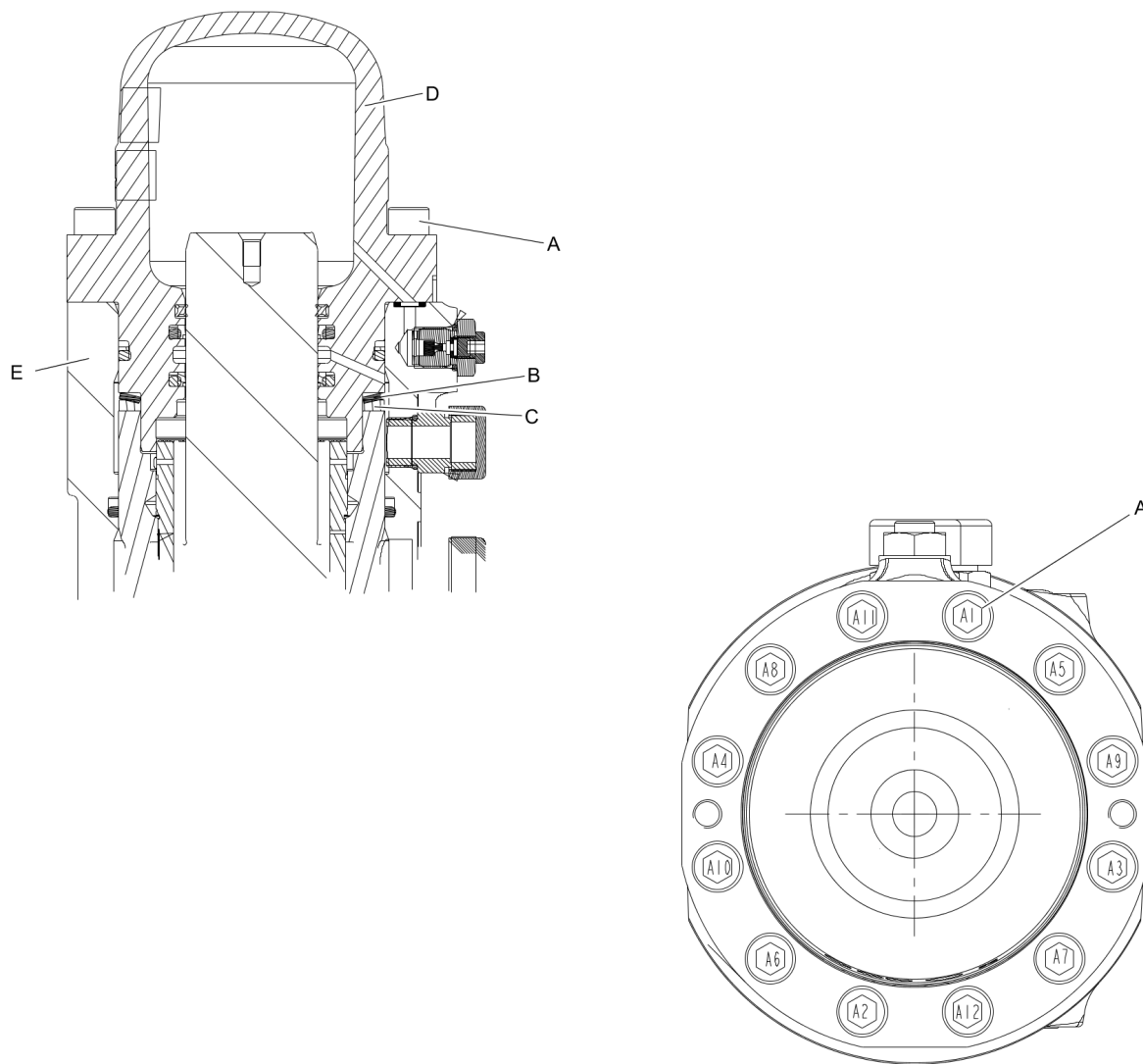
Comments for Page: Tightening torque

(L)OCAL REMARKS

A |

Pretighten the bolts to 25 Nm, proceeding in a crosswise fashion,
then tighten each bolt through 30° in a crosswise fashion,
finally tighten each bolt again through 30° in a crosswise fashion.

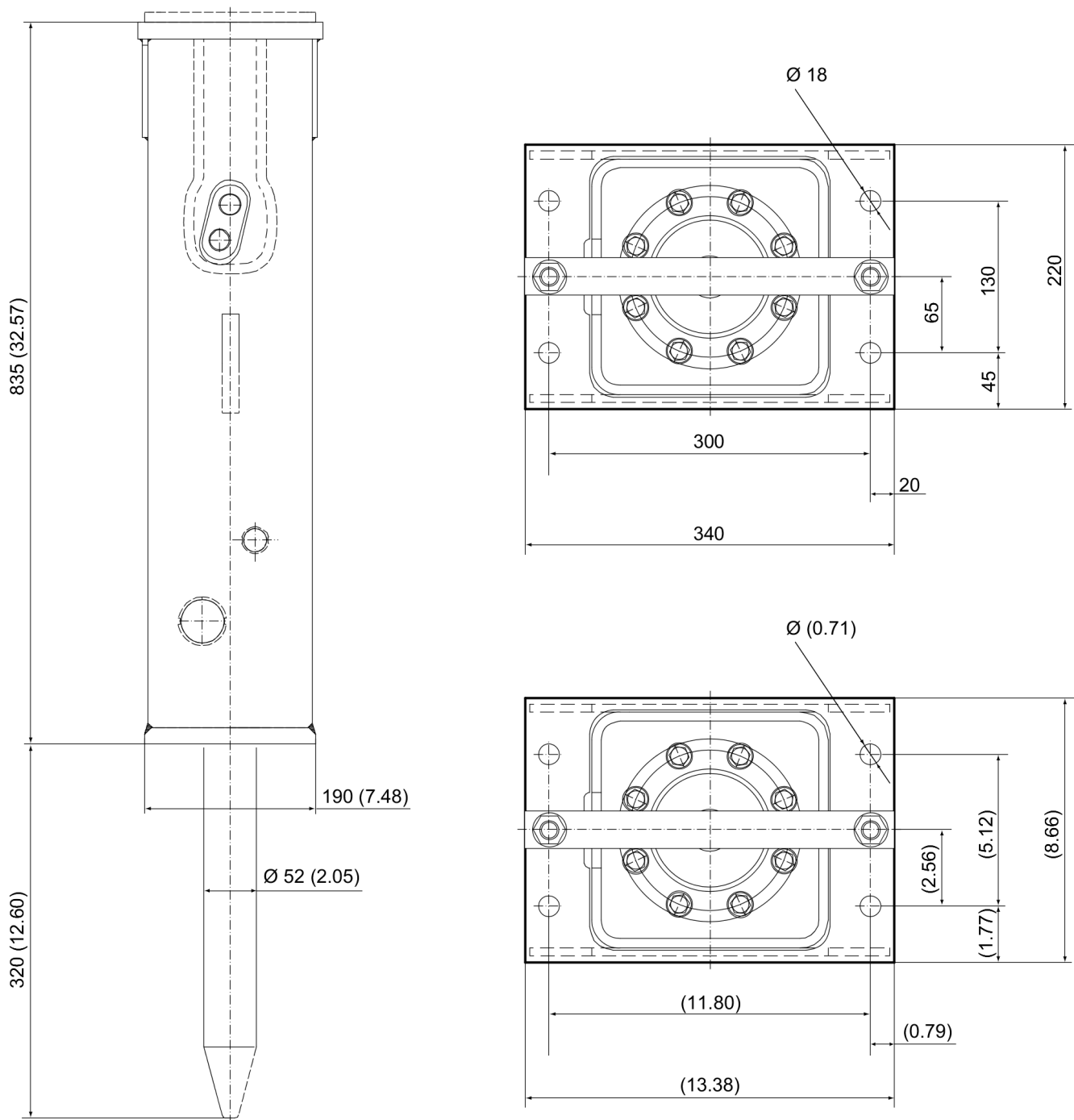
Mechanical Assembly instruction



1. Make sure the spring plate (B) and spacer (C) are centered before mounting the back head (D).
2. Press the back head (D) down on the spring plate (B) and spacer (C).
3. Grease the screws (A) with Molykote® 1000 (Molykote is a registered trademark of Dow Corning Corporation), and manually fit them on the back head (D)
4. Torque the screws (A) in the order from A1 to A12 in one step.

This page intentionally left blank

Mechanical Dimensions



Refer to the DocMine web page for most up-to-date information. The printed information might be outdated.

Wed Oct 20 11:36:28 UTC 2021

This page intentionally left blank

Options/accessories Hydraulic hoses

NO EXPLODED VIEW
AVAILABLE
FOR THIS BOM

Item	Part No.	Name	Qty	L
-	3363491002	Hose, both ends 18 L(M26x1.5) length 1500 mm	2	

Options/accessories Optional equipment

NO EXPLODED VIEW
AVAILABLE
FOR THIS BOM

Item	Part No.	Name	Qty	L
-	3363094910	Chisel paste cartridge for grease gun and CP-Lube, 30 x 500 g (1.1 lbs)	1	A
-	3363034567	GREASE PUMP	1	
-	3363491004	Charging box with nitrogen cylinder, 2 l, 0.43 gal (0.53 US gal)	1	
-	3315303700	Test gauge wear bush	1	
Not Shown	-	Adapter plate matching the carrier	1	B
-	3362269303	Base plate with through borings	1	
-	3363106507	Bolt kit	1	
-	3360209251	Allen key	1	C
-	3360430655	Open end spanner (24/27 mm)	1	D

Comments for Page: Optional equipment

(L)OCAL REMARKS

A | 500 g (1.1 lbs)

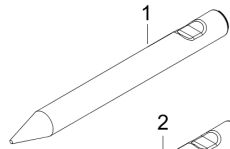
(carton of 30 pieces)

B | Consult the Chicago Pneumatic Customer Center/Dealer in your area.

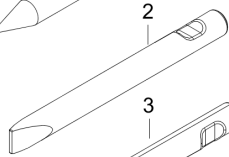
C | 12 mm for bolt kit

D | size 24/27 for bolt kit

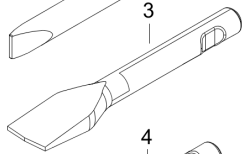
Options/accessories Working tools



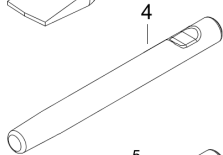
L=320 mm, Lt=530 mm, Wt=7.9 kg
L=12.6 inch, Lt=20.87 inch, Wt=17.4 lb



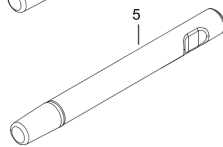
W=52 mm, L=320 mm, Lt=530 mm, Wt=8.3 kg
W=2.05 inch, L=12.6 inch, Lt=20.87 inch, Wt=18.3 lb



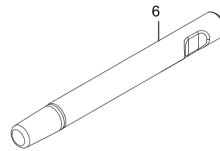
W=120 mm, L=370 mm, Lt=500 mm, Wt=9.7 kg
W=4.72 inch, L=14.57 inch, Lt=19.7 inch, Wt=21.4 lb



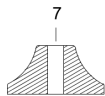
L=320 mm, Lt=530 mm, Wt=8.6 kg
L=12.60 inch, Lt=20.87 inch, Wt=19.0 lb



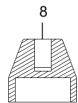
LT=340 mm, Wt=4.8 kg
LT=13.4 inch, Wt=10.6 lb



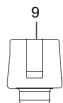
LT=490 mm, Wt=7.3kg
LT=19.3 inch, Wt=16.1 lb



W= 200 mm, Wt=15 kg
W= 7.87 inch, Wt=33.1 lb



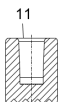
W=100 mm, Wt=8.5 kg
W=3.94 inch, Wt=18.7 lb



W=50 mm, Wt=3.3 kg
W=1.97 inch, Wt=7.3 lb



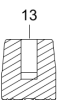
W=100 mm, Wt=5.4 kg
W=3.94 inch, Wt=11.9 lb



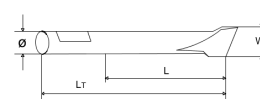
W=80 mm, Wt=3.1 kg
W=3.15 inch, Wt=6.8 lb



W=80 mm, Wt=4.3 kg
W=3.15 inch, Wt=9.5 lb



W=80 mm, Wt=5.2 kg
W=3.15 inch, Wt=11.5 lb



Refer to the DocMine web page for most up-to-date information. The printed information might be outdated.

Wed Oct 20 11:36:29 UTC 2021

Item	Part No.	Name	Qty	L
1	3083342423	Moil point	1	
2	3083342425	Chisel (cross)	1	
3	3363120005	Asphalt cutter (cross)	1	
4	3083342424	Blunt tool	1	
5	3363125929	Shaft	1	
6	3083342481	Shaft	1	
7	3315370600	Tamping pad (square)	1	
8	3315371400	Post driver pad (round)	1	
9	3315372100	Pile driver pad (round)	1	
10	3315372200	PILE DRIVER	1	
11	3315372700	BUSH HAMMER	1	
12	3315372800	Bushing pad (round)	1	
13	3315372900	BUSH HAMMER	1	

Refer to the DocMine web page for most up-to-date information. The printed information might be outdated.

Wed Oct 20 11:36:29 UTC 2021

